

ISMOD

NANO

User Guide

Please read and understand this manual carefully before using this product.

1. SAFETY WARNING & INSTRUCTIONS

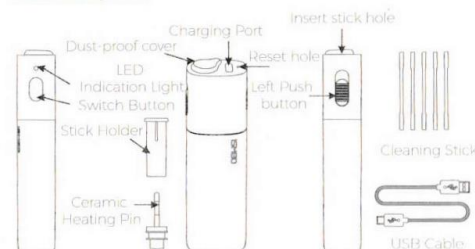
1. When take and check the device while shipping, make sure that the device is shut down.
2. This device is not suitable for: people under age 18 years; children, pregnant, lactating women; people with heart disease, high blood pressure, diabetes, allergies to nicotine, or who is taking medications to treat depression, asthma, and other groups.
3. Keep the device and its components out of the reach of children and pets.
4. Keep the device under room temperature. Do not expose the device to excessive heat or humidity.
5. Do not immerse any part or component of the device in water.
6. Do not use this device where flammable substances, liquids, gases, or oxygen are present.
7. Do not use this device during charging.
8. Do not use a charging device that does not meet the requirements for charging.
9. Before cleaning, opening, or making direct contact with the internal heating components, you must ensure that the device main body has cooled down.
10. Please use and keep the device at an ambient temperature of 5 - 40 °C. A lower or higher temperature environment may temporarily reduce battery life or cause damage to the device.
11. If you notice any abnormal situation such as odor or smoke, please stop charging and using immediately, and contact your service provider.
12. If the battery leaks from the product, please avoid contact with the skin and eyes. If you accidentally touch it, wash it with clean water immediately and consult a doctor immediately.
13. The precautions contained in the user guide cannot cover all possible situations.

EngLish 01

2. OVERVIEW

ISMOD NANO Tobacco heating device with Large capacity Lithium battery, smart & modular design, easy to carry and use.

3. STRUCTURE



4. SPECIFICATION

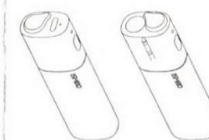
Model	ISMOD NANO
Battery Capacity	1500mAh, 3.7V
Charger Time	Approx. 15 Hours
Charger Method	USB Charger Port, Type C; Charger Setting, 5V/2A
Preheat Duration	15 Seconds
Working Duration	15 puff or 300 seconds
Working Environment Temperature	5 - 40 °C
Product Size	27mm (L) X 17mm(W) X 90mm (H)
Product Weight	51 gram
Upon Full charged	≈ 20 sticks

EngLish 02

5. OPERATION INSTRUCTION

1. PREPARE

Rotate the dust-proof cover



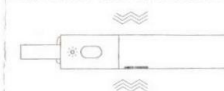
2. INSERT TOBACCO STICK

Insert the tobacco stick into the chamber upright, leaving the filter out.



3. HEAT

Press and hold the button for 1.5 seconds until the LED light blink blue color and the device will have 1st vibration.



The Led Light would indicate the present heating mode.

The device start preheating, the preheating duration is 15 seconds. When the LED light turns solid blue color and 2nd vibration occurred, you can start to enjoy smoking for 4 minutes 45 seconds. When the smoking time comes to the last 30 seconds or reaches 13th puffs, the 3rd vibration occurred, while LED light starts blinks which indicates that the heating period is nearly closed. When the whole smoking time is finished or after 15th puff, then the 4th vibration will occur, while the LED Light will turn off. Those indicate the whole heating process is finished.

Temperature Adjustment (TA) Mode:

LED light color Indication as following:

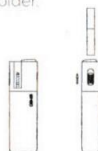
- Green: Low Temperature
- White: Middle Temperature
- Purple: High Temperature

EngLish 03

To start the TA mode, click the button 5 times quickly. The LED light will blink green, white and purple alternatively. Waiting for the indicator light for self-check, stop blinks. Click the button to change the temperature heating mode, one single click would indicate the present heating mode. Press and hold the power button to determine the heating mode or wait for 10 seconds to quit the TA mode.

4. REMOVE TOBACCO STICK

1. Push the left button up and the tobacco stick will be pushed out from the stick holder.
2. Remove the tobacco stick and rotate the dust-proof cover.



5. CLEAN HEATING CHAMBER

Make sure the device is switched off and cooled down before clean it.

1. Separate the top cover from the main body.
2. Pull out heater component from the main body.



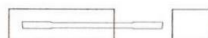
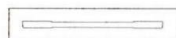
3. Push the stick holder through the left button and pull it out.
4. Take out the parts (stick holder & heater components), then use a cleaning stick to clean the heating chamber.

EngLish 04

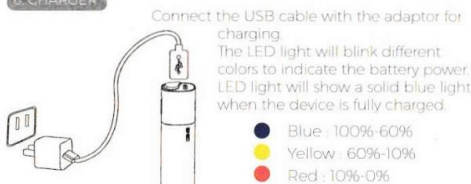


How to use cleaning stick?

1. Take out a cleaning stick with packing.
2. Tear the package apart and remove the cleaning stick.



6. CHARGER



6. OPERATION INSTRUCTION

1. LEFTOVER POWER INDICATION

How to check the leftover battery capacity?
Click the Heating Button to activate the LED light, when the device is switched off.
The LED light would indicate the leftover battery capacity.

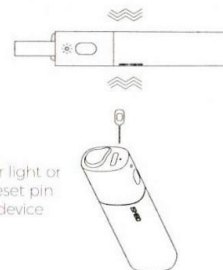
LED light color Indication as following:



EngLish 05

2. QUICK SHUTDOWN

Press and hold the switch button for 15 seconds after vibration.



3. RESET

In case of abnormal indicator light or other malfunction, use the reset pin to insert the top hole of the device for reset.

7. TROUBLESHOOTING

Problem	Checking way	Solve way
Can't insert the tobacco stick into the heating chamber.	Check if tobacco residue from previous tobacco stick is stuck in the heating chamber.	Clean the heating chamber.
Tobacco stick can't place into the heating chamber.	Check if the slot between the tobacco stick holder and the heating chamber is aligned and fastened properly.	Clean the heating chamber.
The Cap can't close and clip properly.	Check alignment between the cap and device, make the tobacco stick hole is in the same position.	Adjust the direction of buckling.
Can't start the device.	Check the leftover power	Charge the device until the charge is complete.
	unused for a long time?	Power loss completed, need to charge.
	Button damaged?	Send it to the local service center.
	Indicator light damaged?	Send it to the local service center.
Blinking red light for 5 seconds.	The leftover battery capacity is low.	Charge the device at once.
Solid red light and gap vibration for 5 seconds.	Check heating pin	Change heating pin.

EngLish 06

8. DISCLAIMERS

1. The ISMOD NANO is battery powered. It needs to get recharged when the battery is low. Do not put the ISMOD NANO near the high-temperature environment or heater to avoid battery damage.
 2. Read all the instructions carefully before you use the ISMOD NANO. Keep the User Guide for future reference. When using the ISMOD NANO, follow the manufacturer's instructions to avoid the possible injuries. The warnings and safety instructions in this User Guide cannot involve all the possibilities and situations that may occur. Be cautious when you use or maintain any personal electronic product.
 3. Use the exclusive cigarette only.
 4. ISMOD NANO contains lithium batteries, for their disposal, please follow the requirement of local government.
- ☆ LITHIUM BATTERY
1. If the product is kept at a high temperature for a long time, the degradation of the lithium battery occurs.
 2. The battery will discharge when it is stored for a long time without operation. Please recharge the device before using it.
 3. When you do not use the device for a long time, avoid storing the device in fully-charged status or under high temperature / humidity condition in order to avoid accelerated deterioration of the battery.
 4. Please avoid putting the battery into the fire to prevent the danger of explosion.

EngLish 07