

Se

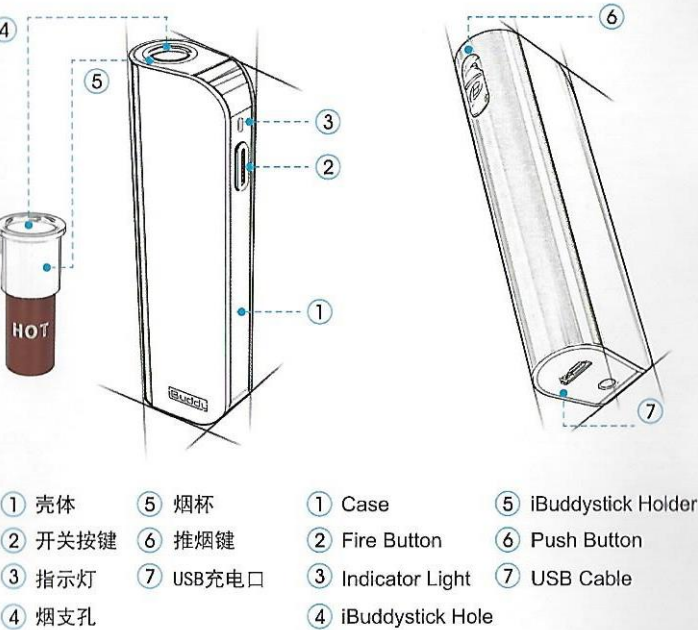
HEATING
KIT



User Manual

Model: iBuddy Se

部件名称/ Content



敬请阅读本产品说明书，正确安全地使用本产品。

优点

- 1. 铝合金外观简洁潮流，使用便利。
- 2. 控温精准。
- 3. 带振动提示功能。

中性配置

- 1. Se烟: 1PC
- 2. 毛刷: 1PC
- 3. USB充电线: 1PC
- 4. 说明书: 1PC

产品参数

产品尺寸:	26. 30*16. 60*84. 00mm
发热棒阻值:	0. 80-0. 85Ω
电池容量:	900mAh
满电可抽烟支数:	12±1支
工作电压:	3. 3-4. 2V
充电电压/电流:	5V = 2A
裸机重量:	43. 5g

使用方法

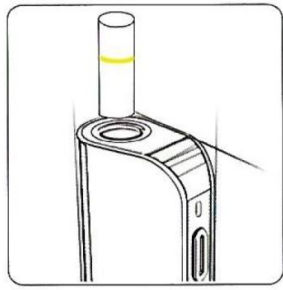


※ 在使用途中，只需长按启动键约三秒即可暂停加热(指示灯闪5次)进入待机状态。

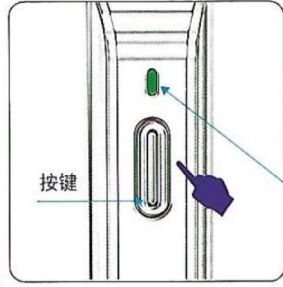


e). 抽吸超时: 加热时间剩余约30秒时，产品振动提示用户加热即将完成，加热完成时指示灯会闪烁5次进行提示，进入待机状态。

使用方法



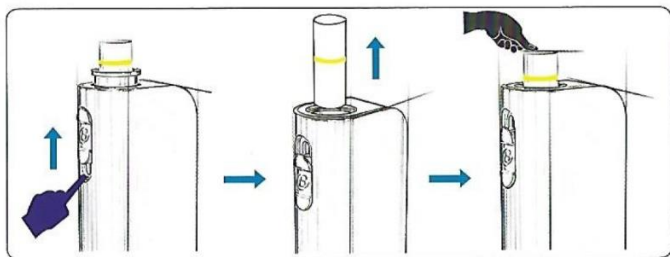
a). 准备: 将烟杯插入产品，往烟杯中插入烟支。



- 指示灯颜色
- 黄色 50%以下
 - 绿色 50%-70%
 - 蓝色 70%以上

使用方法

f). 更换烟支



1. 向上推动推烟键，待烟杯与烟支出来取下 2. 装入烟杯，更换新烟支

g) 关机：在待机状态或者休眠状态下，连续按5次启动键，指示灯闪3次，进入关机状态。

清洁烟杯

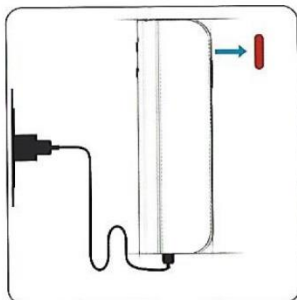
关于清洁：

烘烤装置内部的加热针是直接加热烟支，烟支的烟丝有时会累积残留在加热针周边。为了烘烤系统能够维持高性能运作并保证用户体验，必须定期对烘烤装置进行清洁保养。



烟杯烫手，吸烟后请注意不要触摸，以免烫伤

使用方法



j). 充电：待机时插入USB充电线，红灯点亮，机器进入充电状态。充满电后，红灯熄灭，进入待机状态。



低电保护



闪烁10次

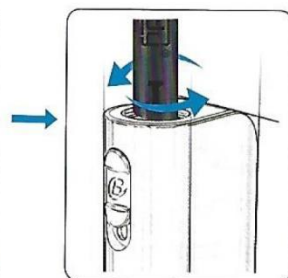
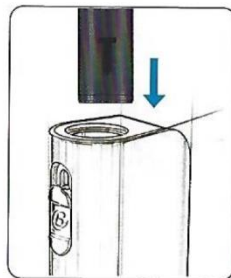


※ 低电：抽烟过程中，如电池电压过低，指示灯会闪烁5次后熄灭，退出加热模式。用户再次按下按键时，指示灯会闪烁10次，提醒用户产品需要进行充电。

使用方法



h). 烟具清洁：按照烟支推出方向拔出烟杯，用配套清理工具插入加热腔内，旋转即可清洁干净。
烟杯冷却后（约3分钟）用专用配置的毛刷大头端，清洁烟杯。
※ 建议使用3个月更换一次毛刷。



顺时针旋转毛刷，清洁发热针。

i). 发热针的清洁方式：棉刷内孔端对准烟孔发热针，垂直方向插到底

保护功能

1. 如果加热程式启动，芯片10秒内检测不到温度变化，会闪5次，退出加热模式。
2. 发热针短路或过流，指示灯闪3次进入重启状态。
3. 如误碰或长按超过5秒时，产品会自动进入保护系统切断升温指示灯熄灭。

注意事项

1. 若操作使用不当，可能会损坏本产品或发生其它危险情况。
2. 在本产品未安装烘烤装置烟杯的情况下请不要使用，以免发生危险。
3. 任何情况下，请不要将本产品和水等液体进行直接接触，以免发生危险。
4. 在无专业人员的指导下，请不要擅自对本产品及其配件进行拆解，以免发生危险，如需进行维修请联系当地售后服务人员。
5. 本产品如果不能正常使用温度异常，请马上停止使用，并将产品放置在周边无易燃物的地方，及时联系当地售后服务人员进行处理。
6. 在电池的液体泄漏的情况下，请避免和眼睛或者皮肤的直接接触，如果不小心接触 眼睛或者碰到皮肤，必须用清水冲洗，并到就近医院就医。
7. 清洁装置时请不要使用溶剂和其它液体（除了专用清洁刷）。
8. 请不要在任何有容易引起燃烧的物品、液体、气体和使用过酸素等 严禁烟火场所使用本产品。



9. 在本产品有明显被损坏、被改造重组、进过水的情况下，请不要继续使用，以免发生危险。

10. 任何情况下，请不要让异物进入到本产品内部（特别是加热腔内），以免发生危险。



11. 烘烤装置请不要放在儿童可以接触到的地方。

12. 请不要在禁止使用电子设备的场所使用烘烤装置。

13. 请不要直接将烘烤装置或任何配件直接放入口中。

14. 未成年人不允许购买使用烘烤装置和烟支。



15. 专用清洁刷要等烘烤装置冷却后再使用。

16. 在使用过程中，如感觉身体不适，请就近咨询医生建议，或停用。

为了保证产品体验不断提升，本产品或进行升级改善，本产品的改善恕不另行通知。

▲ 毛刷属于易耗品，请定期更换。



联系我们

如对本产品有任何疑问 请登入网站：www.iBuddycig.com

使用前请仔细阅读《使用说明书》上的提示事项



本产品的最终解释权归深圳博迪恒业科技有限公司所有

LANGUAGE: EN (ENGLISH)

Please read this User Manual before using the device to ensure safety.

Edges

1. Concise and Fashionable Aluminium Alloy Case, Easy to Use.
2. Temperature control.
3. Vibration prompt function.

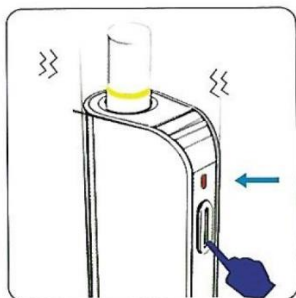
Neutral Component

1. Se device : 1PC
2. Cleaning Brush: 1PC
3. USB Cable: 1PC
4. Use Manual: 1PC

Product Parameters

The Device Dimension:	26.30*16.60*84.00mm
Resistant of Heating Element:	0.80-0.85Ω
The Battery Capacity:	900mAh
iBuddysticks Consumption Under Full Charge:	12±1 iBuddysticks
Working Voltage:	3.3-4.2V
Charging Voltage/ Current:	5V=2A
Device Weight:	43.5g

Use Method



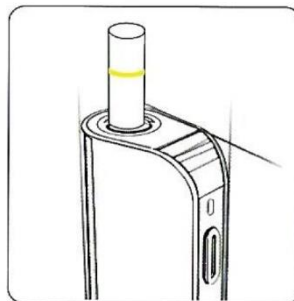
- d) **Heating:** Press the button for three seconds and the machine vibrates. The red light flashes and enters the Heating Mode. The red light turns on and vibrates when the temperature reached the proper value, then system enters Temperature-control Mode that is ready for smoking.

※ Press the button for three seconds to stop heating (indicator flashes five times) and goes into Standby Mode.

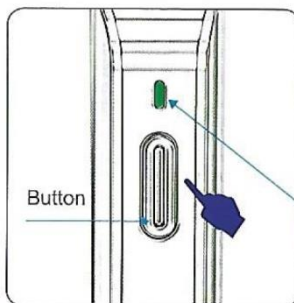


- e) **Overtime Smoking:** When heating time is 30 seconds left, the device will vibrate to remind that the heating is going to complete. The indicator will flash 5 times to remind and enter the Standby Mode when the heating is completed.

Use Method



- a) **Preparation:** Load the iBuddystick Holder into the heating device, then insert a stick into the Holder.



- b) **Power-on:** Press the Fire button five times succession in two seconds; the indicator light blinks three times then shows the power. The device goes into Stand-by Mode if left without operation over 10 seconds.

- c) **Power Indication:** Press the Fire button once if the device is in Standby Mode. The indicator color represents corresponding battery power:

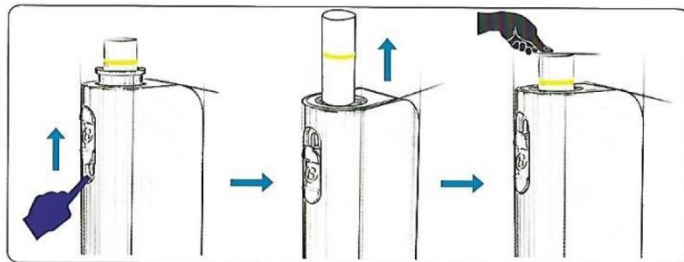
Indicator color:

- Yellow: <50%
- Green: 50%-70%
- Blue: >70%

EN EN
9 10

Use Method

f). iBuddystick Replacement



1. Push up the button to remove the iBuddystick when the holder and iBuddystick come out.
2. Then insert a new iBuddystick into the holder.

- g). **Power-off:** Press the fire button 5 times consistently under Stand-by or Dormant mode, the indicator flashes three times and the device turns off.

Holder Cleaning

About Cleaning:

Inside the iBuddystick holder, the heating pin is used to heat the iBuddystick directly; the iBuddystick fragments may accumulate around the pin. In order to keep optimal performance and a consistent taste, clean your iBuddystick holder regularly.

Notice:



Be ware of burns!
The iBuddystick holder is hot!
Please DO NOT touch the holder after smoking!

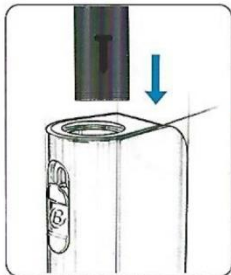
EN EN
11 12

Use Method

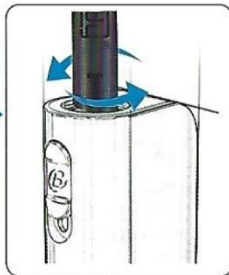


h) **Holder Cleaning:** Remove the iBuddystick holder from the Se device (Please make sure the iBuddystick holder cools down before removing it). Insert the cleaning brush into the heating chamber, and then gently clean with a twisting motion.

※ It is recommended to replace the brush within three months.



i) **Heating Pin Cleaning:** Insert the cleaning brush vertically to the bottom of the heating pin to clean.



Rotate the brush to clean the heating pin

Protection Function

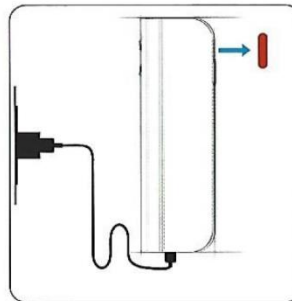
1. If the chip cannot detect a temperature change within 10 seconds after Heating program starts, it will flash five times and exit Heating Mode.
2. If short circuit or over-current happened to heating-pin, the LED blinks three times and system enters Restart State.
3. If the button is pressed accidentally over five seconds, the product automatically enters Protection System and stops heating, the indicator turns off.

Attention

1. Any improper operations may damage the device or result in severe injury.
2. Do NOT use the device without iBuddystick holder assembled.
3. Do NOT let the device direct touch with water and other liquids.
4. Do NOT attempt to repair or open any components of this product without the guidance of professional staff. In necessary, please contact your local after-sales service center for help.
5. Do NOT use the device if it becomes unusual warm, keep the device in a place without any combustible material closed, and contact your local after-sales service center immediately for help.
6. In case battery liquid leaking, please avoid contacting with skin and eyes. If contact occurs, flush thoroughly with water and seek medical attention immediately.
7. Solvents or any other liquids must NEVER be used for cleaning.
8. Please do NOT use this product in any places where there is a possibility of burning, such as solid, liquids, gas, and peroxyacids etc.



Use Method



j). **Charging:** Insert the USB charging cable under Standby Mode, the red light turns on and the device enters Charging Mode. When charge is completed, the red light turns off and the device enters Standby Mode.



※ **Low Power:** If low power occurs during smoking, the indicator flashes five times then turns off, the device exits Heating Mode. If the Fire button is pressed again, the indicator will flash 10 times to remind charging.

EN EN
13 14

9. Do NOT use the device if it has been obviously damaged, modified or immersed in liquid.
 10. Do NOT allow foreign matter to enter the inside of the product (especially in the heating chamber) to avoid danger.
 11. Keep the device out of reach from children.
 12. Do NOT use it in the place which electronic devices are prohibited.
 13. Do NOT put the device and its components directly into the mouth.
 14. The device and matched iBuddystick must NOT be sold to minors.
 15. Do NOT clean the device before it cooled down.
 16. Do NOT use the device if you feel uncomfortable during using, and please consult your doctor immediately.
- The upgrade of the device may occur to be upgraded without notice.



▲ Brush is a consumable item, please replace it regularly



Contact

If you have any question about this product, please find us on **www.iBuddycig.com**

Please read the User Manual clearly before using.

All rights reserved by Shenzhen Buddy Technology Co., Ltd.



EN EN
15 16



iBuddy®

www.iBuddycig.com

Shenzhen Buddy Technology Co., Ltd.

Add.: Fuyong Town, Bao'an District, Shenzhen City, China.

深圳博迪恒业科技有限公司

地址：深圳市宝安区福永

Made in China

