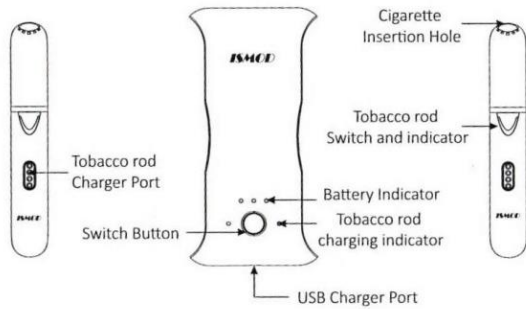


ISMOD II Plus

User Guide

Please read and understand this manual carefully before using this product.

4. Operating Instructions

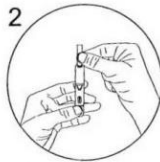


5. Use Instruction

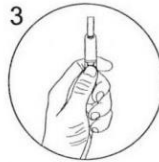
1. Prepare



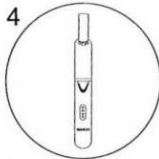
Remove Tobacco rod from power bank



Put the cigarette into the tobacco rod



Press the button and hold for 1.5 seconds, Tobacco rod starts to preheat.



Wait for 15 seconds until the device vibrates to indicate the pre-heating process has been finished



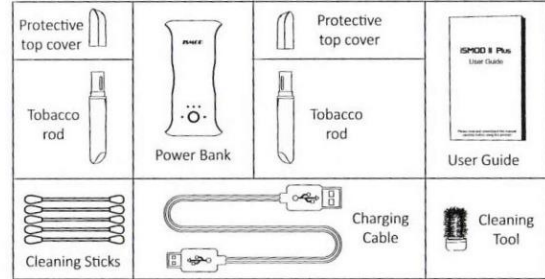
After the blue light turns solid you can start smoking. When the smoking reaches 12 puffs, a prompt vibration is generated and the blue light flashes. When smoking reaches 14 puffs or when the heating time finishes, the device stops working and a prompt vibration is generated.

2

1. Overview

ISMOD II Plus is a heat not burn device which comes with a built-in large capacity lithium battery, two smoking holders and a large charging base that makes it portable, convenient and durable.

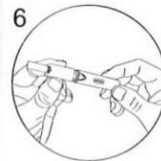
2. Package Content



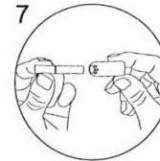
3. Parameter:

Model	ISMOD II Plus
Power Requirement	Battery Capacity(2600mAh,3.7v) Maximum Discharger Current: 2A
Charger Time	Power bank charger time: 3h; Tobacco Rod charger time: 6minutes
Charger Method	USB Charger Port: Micro USB Charger Setting: 5V/2A
Working Temperature	5-40 C
Product Weight	101mm*55mm*21mm
Product Size	104.5g

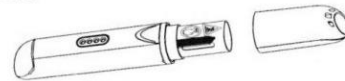
1



Remove the cigarette along with the protective top cover after finish



Remove the cigarette



Warnings:

When smoking is complete, pay attention to the warning sign on the internal insulation of the tobacco rod while removing the cigarette. When installing the protective cover again, pay attention to the installation position to prevent the protection cover from being too fast and cause the damage of the heating rod.

2. Stop Smoking

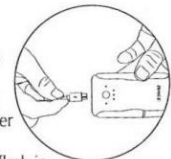
- If you need to stop smoking during the smoking operation, press and hold the control switch for 1.5 seconds, the tobacco rod will stop working and enter the shutdown state, and the indicator light will go out and a vibration prompt will be generated
- Under the normal working conditions of smoking, after the smoking is completed, the tobacco rod generates a vibration prompt, and the tobacco rod indicator lights flashes and then enters the shutdown state.
- After the smoking is completed, put the tobacco rod back to the charging host for charging work, so that it can be used again next time.

Note: Under the normal smoking working state, if the amount of smoke is significantly reduced, or the smoking taste is weakened, it means that the smoke has been used and the cigarette needs to be replaced.

6. Charging instructions

1. Charging Bank operation instructions

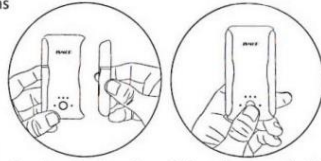
- It is recommended to charge the charging Bank for the first time to ensure the normal use of the product.
- When you are ready to charge the main unit, align the charging cable with the USB charging port and the other end for the power connection.
- When charging, the charging indicator of the host will flash in sequence until the indicator is solid, indicating that charging is complete.



3

2. Tobacco rod Charging instructions

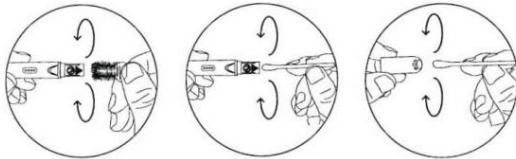
- Before preparing for charging, you need to ensure that the charging bank is turned on and that there is enough power available.
- After each cigarette is over, you need to charge it to use it again.
- When charging, you need to align the charging interface of the tobacco rod with the power bank. The magnetic function of the product will automatically turn on and charge.
- The corresponding cigarette charging indicator will flash when charging, red flash indicates that charging is in progress, blue flash indicates charging is complete.
- After the tobacco rod is fully charged, the indicator will automatically go out.



7. Cleaning and maintenance

The product itself comes with a cleaning kit for the cleaning and maintenance of the tobacco rod and the protective top cover.

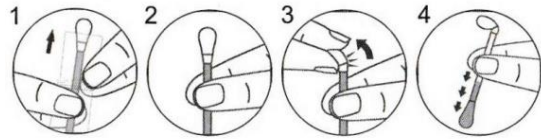
- When cleaning the tobacco rod, pull out the protective top cover of the tobacco rod, insert the cleaning tool according to the following picture, turn it several times, then remove the residue on the cleaning tool. Use also the attached cleaning sticks for finishing work.



- To prevent clogging of the holes in the upper cover, use the included cleaning sticks to clean it.

4

How to use cleaning sticks:



1 Pull the end of the color loop of the cleaning sticks up along the film.

2 After pulling out the cleaning sticks, hold the upper end (the end with the color ring) of the cleaning sticks in one hand.

3 Break the cleaning sticks along the colored print.

4 The liquid in the tube can be used when it flows to half of the tube body.

8. Notice

- The product is not available for minors and people who are weak both physically and mentally or unaware of the safe usage of it, please take care of it. (Accident risk)
- Do not use the device if the top cap has been removed lest get scalded by the heating accessories. (Burn Risk)
- Do not put the device to any other use except for what is indicated in the user guide. (Accident risk)
- Do not immerse the device or any accessories into the water. (Risk of failure, this product is not waterproof)
- Do not use any charging device which isn't up to the mark. (Accident risk)
- Stop charging or using the device if a bad smell or smoke appears and contact your service provider immediately. (Accident risk)
- If there is any battery leakage, keep the leaked liquid away from the skin and eyes. Please wash it immediately with water and seek medical treatment at once. (Accident risk)

5

9. Common Troubles and Corresponding Solutions

The charging base could not turn on	Check if there is enough power with the charging base	Charge the charging base until there is enough power within it
	Check if it hasn't been used for a long time	The battery is low, charge the charging base at once
	Check if there is something wrong with the button	Send it to the local service center
Check if there is something wrong with the indicator		
The charging base can't get charged	Can't charge the charging base	
The holder can't get charged normally	Check if the holder is getting charged	Never charge the charging base and the holder simultaneously
	Check if the charging port is broken	Send it to the local service center
The indicator blinks abnormally	Check if the red light blinks when the button is pressed and go out when released	The battery is low, charge the device at once
	Prevent the device from getting overheated	Wait for 3-5mins until the temperature of the device is normal
	Check if there is something wrong with the heating blade	Send it to the local service center

6

10. Disclaimers

Please follow the instructions of safety precautions, which are essential.

- The ISMOD II Plus is battery powered. It needs to get recharged when the battery is low. Do not put the ISMOD II Plus near high-temperature environment or heater to avoid battery damage.
- Read all the instructions carefully before you use the ISMOD II Plus. Keep the User Guide for future reference. When using the ISMOD II Plus, follow the manufacturer's instructions to avoid the possible injuries. The warnings and safety instructions in this User Guide cannot involve all the possibilities and situations that may occur. Be cautious when you use or maintain any personal electronic product.
- Use the exclusive cigarette only.
- ISMOD II Plus contains lithium batteries, for their disposal, please follow the requirement of local government.

★ Lithium Battery

- If the product is kept at a high temperature for a long time, the degradation of the lithium battery occurs.
- The battery will discharge when it is stored for a long time without operation. Please recharge the device before using.
- When you do not use the device for a long time, avoid storing the device in fully-charged status or under high temperature/humidity condition in order to avoid accelerated deterioration of the battery.