

浪琴 LANGQIN

SNS SNS03
<http://www.sz-sns.com>

How to use

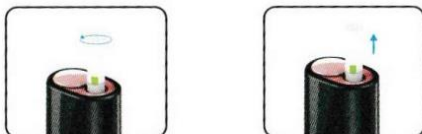
3. Long press the switch for 3 seconds, the indicator will flash and vibrate, to start preheating for 15 seconds. You can smoke after the indicator is always light up and vibrating, long press the switch midway to turn off manually.



Notes:
When heating, press the switch to choose different gears to experience different tastes. The blue indicator flashes several times as low gear, the yellow as middle gear, and the red as high gear.
The preheating time is 15 seconds, smoking time is 3 minutes and 20 seconds, it will vibrate twice which indicates that you can continue to smoke 30 more seconds, then the indicator light goes out and the heating is over;

It is not allowed to pull out the heating stick when the indicator is on that indicates the smoking time is not over yet.
It is not allowed to charge the holder when the indicator is on that indicates the smoking time is not over yet.
It is not allowed to put the holder in a pocket or other enclosed environment when the indicator is on that indicates the smoking time is not over yet.
Can smoke about 30 cigarettes continuously.

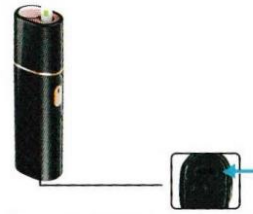
4. Way to pull the stick out after smoking should be as follows, or tobacco will be omitted in inside the holder to affect the next smoking.



Rotate the tobacco stick for a circle and pull it out

How to use

1. Unpack the box, take out the product, please charge the holder first, put the USB cable insert the USB port, then insert the bottom of the pole vertically into the charging seat. As following pictures



Notes:
a. It takes 2 hours to charging for first time, otherwise it will affect the battery's life.
b. The indicator of holder will flash while the it is charging. According to the charge, the flash colors will change. It flashes red when the quantity of electricity is below 35%. It flashes yellow when the quantity of electricity is 35-75%. It flashes blue when the quantity of electricity is 75-100%. The blue light is always on which indicates full charged.
c. When the device is in the power-on state, press the switch lightly, blue indicator is 75-100% power, yellow is 35-75% power, red is 35% power.
2. Press the switch 5 times quickly and continuously after finish the charging, then open the slip cover and place a heating stick downward into the holder to the end vertically.



Notes:
Press the switch quickly for 5 times to turn on or off. When the power is power on, just press the switch once and the indicator will light.

Holder maintenance and cleaning

1. Automatically Clean

In the case of standby, press the switch 3 times continuously and quickly, the indicator will flash alternately blue, yellow and red, it shows that the holder starts the automatic cleaning mode.

Notes: Don't insert the tobacco stick into the holder.



2. Manually Clean

Remove the upper cover and pipe, insert the brush vertically into the pipe, rotate several times to achieve the inner cleaning of the holder, as shown below.



Notes:
To avoid heating the holder during cleaning.
Must use the special cleaning brush for cleaning.

Product structure diagram



Safety warnings and instructions

This product is prohibited under the age of 18.

This product is prohibited under the age of 18. Safety Warnings and Instructions included in this User Guide cannot cover all possible conditions and situations that could occur. Caution and care must be exercised when using or maintaining any personal electronic product.

To reduce the chance of injury, always use these products in accordance with the manufactures' instructions.

These products are not intended for use by persons with reduce physical, sensory or mental capabilities or lack of experience and knowledge unless they have been given supervision or instruction to use the products in a safe way and understand the hazards involved. Children should be supervised to ensure that they do not play with with these products. Keep the components and packing out of reach from children at all times.

Do not operate these products where the use of electronic devices is prohibited. Turn off the device (Pocket Charger and Holder) in places where flammable materials, liquids and gases are present. Only use the matching USB Power Adapter for charging the Pocket charger. The Pocket Charger must be charged at a safe ultra-low voltage of 5V. Only charge the Pocket Charger indoors. Do not attempt to touch the Holder heater any time. This could cause injury and/or damage to he heater. Do not attempt to touch the USB Power Adaptor if it is wet.

These products contains no user-serviceable parts. Do not attempt to open, service or repair any component of this product or to replace any of the components' batteries.

Doing so may result in personal injury.

Do not use these products if:

- The Holder Cap is removed.
- They become wet or are immersed in any liquid(this does not apply to the Holder Cap).
- They appear damaged, broken or dismantled.
- They haven been exposed to excessive heat or moisture.
- Their batteries appear to be leaking.

ATTENTION

The device works exclusively with special tobacco sticks.

Never use the Holder with a cigarette or similar products.

Do not remove tobacco stick while in use.

Do not operate the device (Pocket Charger, Holder) if burnt marks appear on a tobacco stick or if large amount of visible aerosol comes out of from it.

Do not drop this product or otherwise subject it to strong shock. Store in a clean, dry, cool place.

Troubleshooting

Troubles	Reason	Solutions
The holder can't be charged	It's not connected to the USB cable	Please connect it to the USB cable
	The life of battery has to the end	Please contact the customer care to replace battery
The upper cover can't be closed	Foreign materials in the pipe	Open the pipe to clean it
The cartridge cannot be inserted into	Foreign materials in the pipe	Open the pipe to clean it
The smoke is small	Too much dirt inside the pipe	Need cleaning
The holder is electric but doesn't heat	The heater pin is damaged	Please contact the customer care to replace heater pin

Notes:

If the above troubleshooting can not solve your problem, please contact the customer care, do not handle it yourself.

Waste recovery



This product and its individual parts(including batteries)must not be disposed of with your other household waste. Instead, it is your responsibility to dispose of your waste equipment by handing it over to a designated collection point for the recycling of waste electrical and electronic equipment . Amongst others, waste batteries can be returned free of charge at the point of sale. The separate collection and recycling of your waste equipment (including batteries)at the time of disposal will help to conserve natural resources and ensure that it is recycled in a manner that protects human health and the environment. Disposing waste equipment as unsorted Municipal waste(e.g. by waste incineration or land filling)can have negative effects on the environment and human health. For more information about where you can drop off your waste equipment for recycling, please contact you local city office, your local household waste disposal service or the shop where you purchased the device.

This product is compliance with mandatory legal requirements is confirmed through certificates and national testing agencies. Thank you for using our products.



Specification

Model: SNS03

Product size: 108X32X22mm

Input voltage: 5V

Output voltage: 3.2V~4.2V

Output current: 2.0A

Battery capacity: 2900mAh

Charging time: 1.5 ~2 hours

Charging mode: USB charging

Gross weight: 220g

Net weight: 87g

Packing list

Device: 1

USB Cable: 1

Cleaning brush: 1

User Manual : 1