

JLV

JLV Cube Mini

Quick Start Guide

+1-866-JLV-2019 / WWW.MYJLV.COM

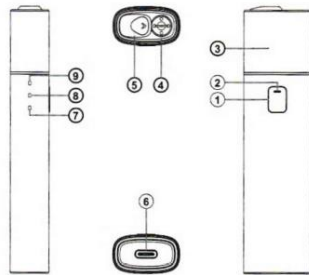
First Start

Pressing the power button for 3 seconds, the device enters into self-inspection. After that, the indicator light is off and the device is working. If the red light is on in self-inspection process, please contact after-sales service.

Specification

Device Size	106*27*15.5mm
Temperature Control	Exclusive ITCS® (Intelligent Temperature Control System)
Heating Time	15 puffs or 300s
Battery Capacity	890mAh
Input Voltage	5V
Input Current	2.4A
Charging Time	about 28mins
Battery Life	about 13 heat sticks
Weight	55.4g

Product Detail

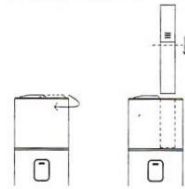


1. Power Button
2. Status Light
3. Top Cover
4. Cigarette Inlet
5. Slider

6. Charging Port
7. Battery LED1
8. Battery LED2
9. Battery LED3

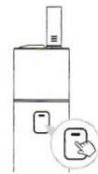
Usage

1. Insert heat stick



Push the slider, insert heat stick. Do not insert it slantwise, beware of breaking the heating blade.

2. Preheating



Press power button for 3 seconds to preheating. After 18 seconds, white light always on and vibrates.

Model: MINI



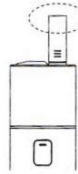
WARNING:

This product has lock function to avoid wrong press accidentally, u can only operate this device with lock function off status.

Lock function on when press the button for 4 seconds and it will shake for twice times.

Lock function off when press the button for 5 times continuously in 3 seconds and it will shake for twice times.

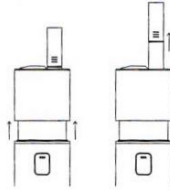
3. Use



After preheating, enter into smoking mode.

- * After 300 seconds/15 puffs and then automatically stop heating.
- * Long press for 3 seconds can also stop heating when the device is working.

4. Pull out



Push the device in the arrow direction and take out the heat stick.

Low Voltage Protection

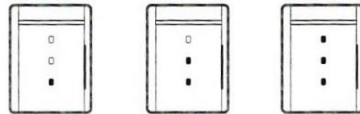
Low voltage status: Press the power button, the red light flickers.

Charging Function

USB type C quick charge (the adapter output required to reach 5V / 2.4A)

Battery Display

To display current battery quantity, short press the power button.



- ⚠ Do not touch the heating blade to prevent scald when it is working at high temperature.
- ⚠ Cleaning should be done when the heater is cooled.
- ⚠ Be careful of damage to heater when cleaning, otherwise no warranty will be granted.

Self-cleaning

Press the power button for five times continuously to enter the automatic cleaning function. The red light flashes about 18 seconds in the cleaning process. During the cleaning process, long-press the power button to exit. Do not insert heat stick in self-cleaning process.

SAFETY WARNINGS AND INSTRUCTIONS

- ⚠ Build in non-removable battery; Be aware of not to replace the battery to cause the damage of battery

- Turn off the device in places where flammable materials, liquids and gases are present.
- Only charge the device indoors.
- Do not attempt to touch the device heater any time. This could cause injury and/or damage to the heater.
- Do not attempt to touch the USB Power Adaptor if it is wet.
- This product contains no user-serviceable parts. Do not attempt to open, service or repair any component of this product or to replace any of the components' batteries.
- ⚠ Doing so may result in personal injury.
 - Do not use this product if:
 - It becomes wet or is immersed in any liquid (this does not apply to the device cap).
 - It appears damaged, broken or dismantled.
 - It has been exposed to excessive heat or moisture.
 - Its' batteries appear to be leaking.

ATTENTION

- Do not operate holder System if burnt marks appear on the Smoke-Stick or if large amount of visible aerosol comes out of from it.
- Do not drop this product or otherwise subject it to strong shock.

Temperature regulation

Press three times to adjust the temperature when the device is working.

1. The default setting is that the second light is on, which is apply to JLV HBEC sticks.
2. Press three times, the third light is on, which is the highest temperature.
3. Press three times, the first light is on, which is apply to the IQOS sticks.
4. After adjusting the temperature, it is necessary to save the adjusted temperature.
5. Anti-false trigger function is turned on by default.

Working Status

Start-up status: Press the power button for 3 seconds, the white light flickers and vibrates, and then starts to preheating.

Working status: Preheating 18 seconds, the white light is on and vibrates into the working status.

Working finished: The device vibrates and white light flickers when it has 20 seconds or 2 puffs left. The white light turns off when working is finished.

LED1 On: Low Battery

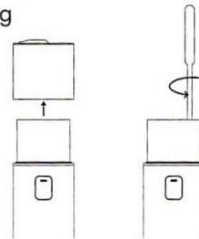
LED1, LED2 On: Medium Battery

LED1, LED2, LED3 On: High Battery

Forced Shutdown

Press the power button for more than 3 seconds, the device stops heating and shut down.

Cleaning



- and device by yourself. Battery replacement should be done by the authorized service center.
- ⚠ This symbol indicates that caution is necessary when operating the product.
 - Safety Warnings and Instructions included in this User Guide cannot cover all possible conditions and situations that could occur. Caution and care must be exercised when using or maintaining any personal electronic product.
- ⚠ To reduce the chance of injury, always use this product in accordance with the manufacturer's instructions.
 - This product is not intended for use by persons with reduced physical, sensory or mental capabilities or lack of experience and knowledge unless they have been given supervision or instruction to use the product in a safe way and understand the hazards involved.
 - Children should be supervised to ensure that they do not play with this product. Keep this product, its components and packaging out of reach from children at all times.
- ⚠ Do not operate this product where the use of electronic devices is prohibited.

Information for disposing of the Holder. Valid across European Union and EFTA.

- ⚠ This symbol on the device or on its packaging indicates that this product and its individual parts (including batteries) must not be disposed of with your other household waste. Instead, it is your responsibility to dispose of your waste equipment by handing it over to a designated collection point for the recycling of waste electrical and electronic equipment. The separate collection and recycling of your waste equipment : (including batteries) at the time of disposal will help to conserve natural resources and ensure that it is recycled in a manner that protects human health and the environment. Disposing waste equipment as unsorted municipal waste (e.g. by waste incineration or landfilling) can have negative effects on the environment and human health. For more information about where you can drop off your waste equipment for recycling, please contact your local city office, your local household waste disposal service or the shop where you purchased the device.